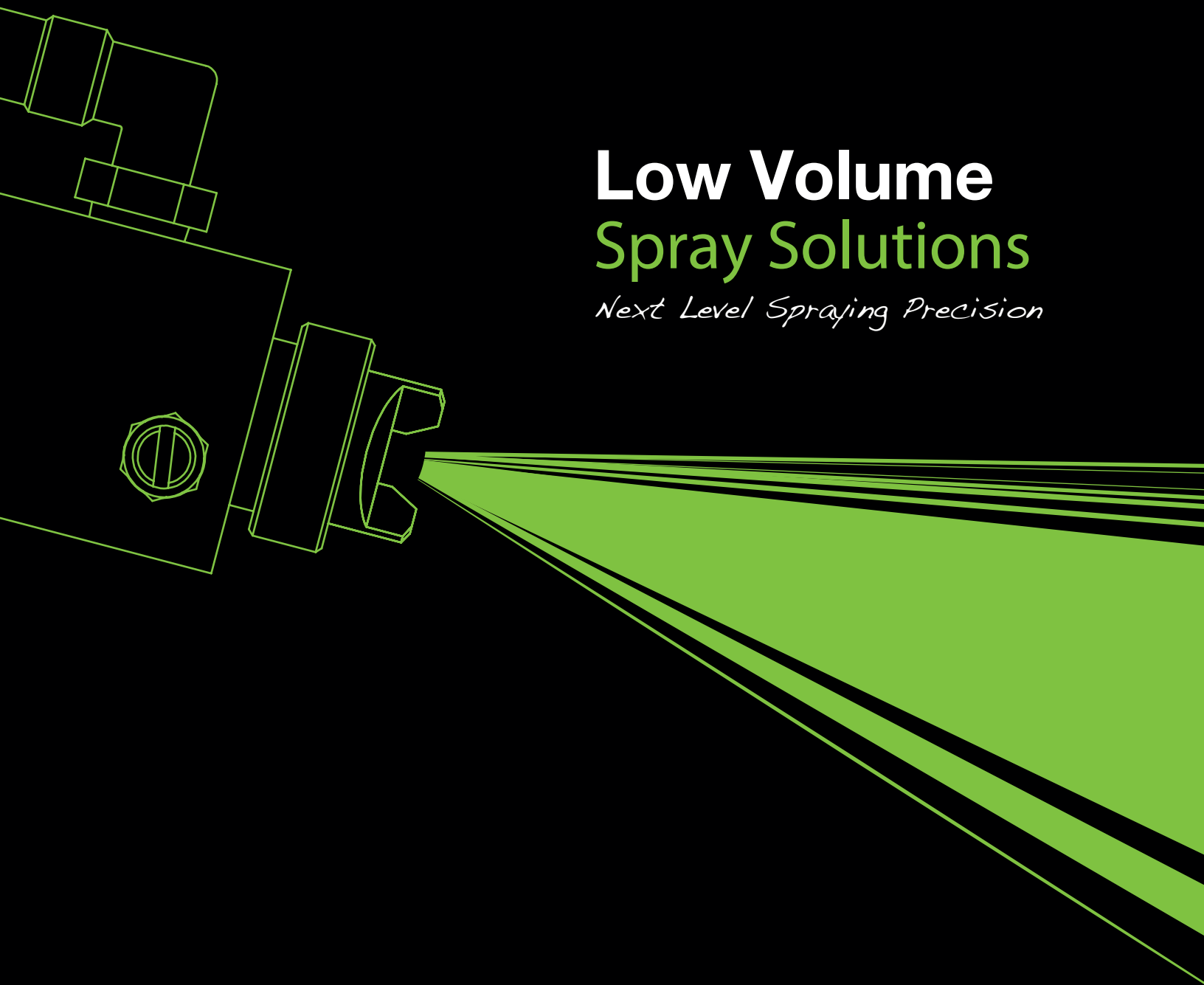




Low Volume Spray Solutions

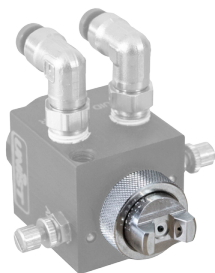
Next Level Spraying Precision



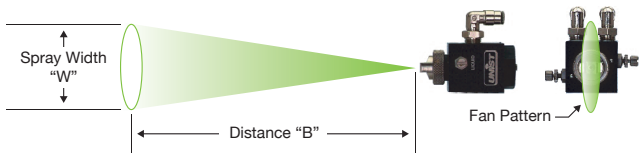
Low Volume Nozzle Spray Patterns

(For Standard & Remote Adjustment Nozzles)

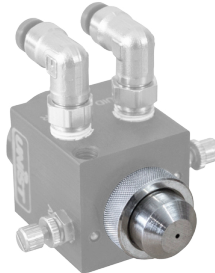
Fan Spray | External Mix



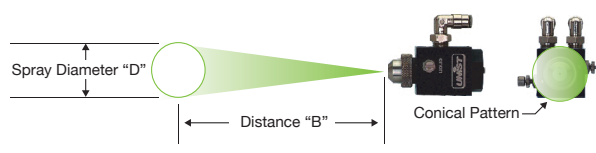
Approximate Spray Dimensions	
"B"	"W" *
[in]	[in]
3 (76 mm)	7.5 (191 mm)
6 (152 mm)	12 (305 mm)
9 (229 mm)	15 (381 mm)
12 (305 mm)	18 (457 mm)
15 (381 mm)	23 (584 mm)
18 (457 mm)	26 (660 mm)



Conical Spray | Internal Mix



Approximate Spray Dimensions	
"B"	"D" *
[in]	[in]
3 (76 mm)	1.25 (32 mm)
6 (152 mm)	2.25 (57 mm)
12 (305 mm)	3.50 (89 mm)
18 (457 mm)	4.25 (108 mm)
24 (610 mm)	5.50 (140 mm)
30 (762 mm)	6.75 (172 mm)

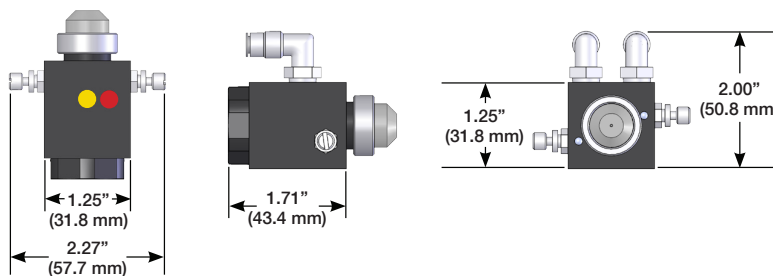


* Data approximates spray pattern for the Low Volume Spray Nozzles. Please note that these values are a guideline for initial nozzle setup. Actual spray pattern will vary depending on the applied fluid, air and fluid pressures, and metering screw settings.

Low Volume Nozzle Dimensions

(For Standard & Remote Adjustment Nozzles)

- M6 X 1 Mounting Hole
- 1/4-20 Mounting Hole



Low Volume Nozzle Specifications

(For Standard & Remote Adjustment Nozzles)

- **Air Supply Pressure:** 40-100 psi (2-7 Bar)
(dry filtered compressed air)
- **Fluid Supply Pressure:** 5-100 psi (.34-7 Bar)
- **Maximum Cycle Rate:** 200 Cycles Per Min
- **Operating Temp Range:** 40-150°F (4-65°C)
- **Body:** Anodized Aluminum
- **Needle Valves:** Stainless Steel
- **Fittings:** Nickel-Plated Brass
- **Fluid Seal Material:** Fluorocarbon (Viton)
- **Air Seal Material:** Nitrile (Buna-N)



LIT-00060